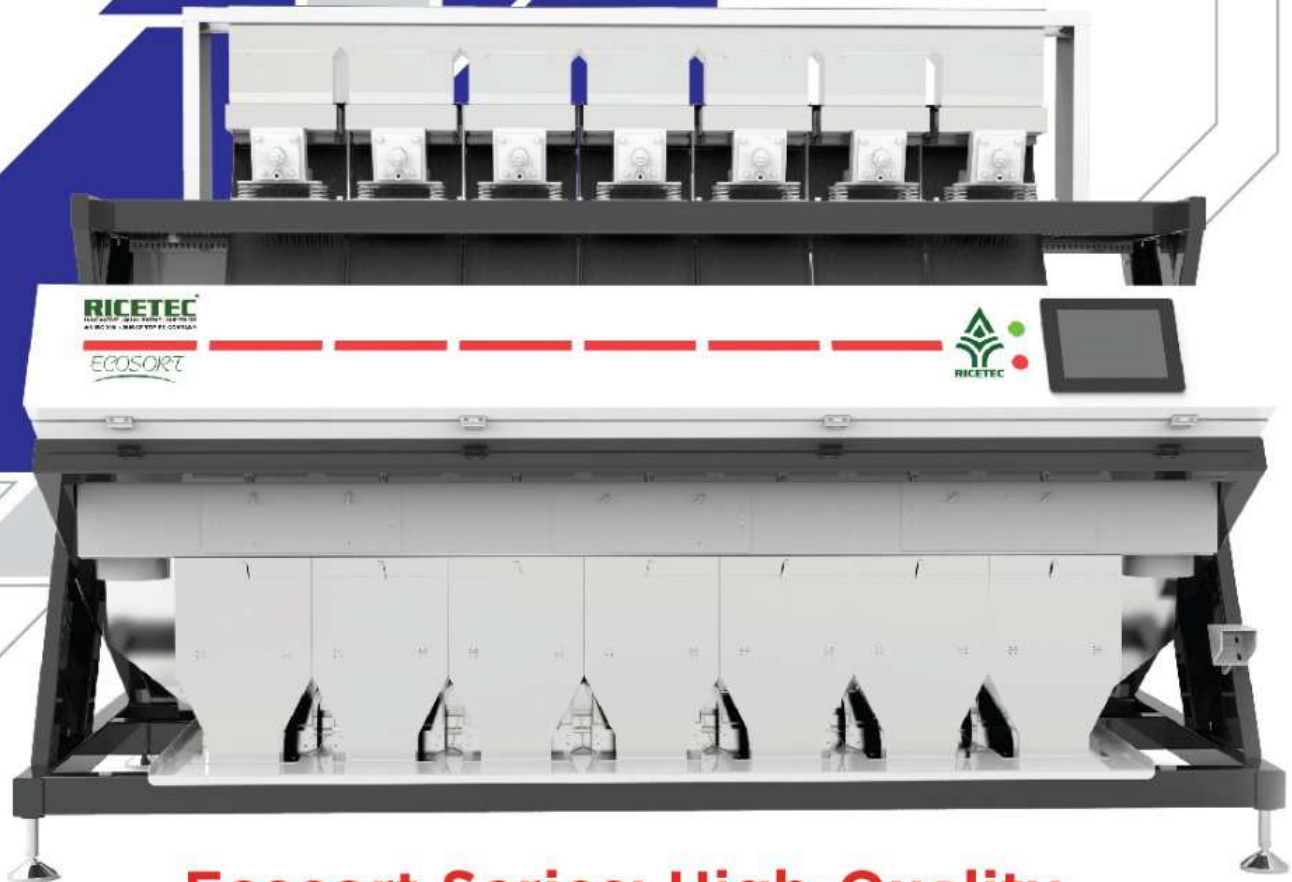


CELEBRATING  
**20**<sup>+</sup>  
YEARS  
OF EXCELLENCE



**Ecosort Series: High-Quality  
Sorting at an Economical Price for CMR Rice**



**RICETECH MACHINERY INDIA PRIVATE LIMITED**

📍 Survey No.15, Suraram Industrial Area, Hyderabad 500 055, Telangana State, India.

🌐 [www.ricetecmachinery.com](http://www.ricetecmachinery.com) ✉ Email: [sales@ricetecmachinery.com](mailto:sales@ricetecmachinery.com)

**Sales : 94406 24430 | Service & Spares: 94406 24438, 94406 24439**



## Functional Features

### Intelligent Image Recognition



The new Hi-Vision multidimensional feature recognition technology continuously perceives, improves and iterates data, achieving limitless recognition capabilities.

### Adaptive Light Source System



Ricetec's Upgraded lighting system uses high-brightness, high-penetration light sources to intelligently match sorting needs, improving penetration in dark areas for better sorting accuracy.

### Target Position 3.0 Algorithm



Based on material trajectory, posture, position, speed and other information. It accurately matches the best hitting method to ensure a 100% hit rate.

### All Things Connected



Real Time online on Ricetec Cloud platform, remote interconnection for control, maintenance, early warning, upgrading, operation & Maintenance data, intelligent online operation inspection etc.

### Super Alloy UHF Ejector



Independently developed with national patents, the UHF ejector boasts low energy consumption, high wear and high-temperature resistance and lifetime durability.

### S-Class Vision System



Customized ultra-high-transmission optics, multi-frame synthetic noise reduction, true colour reproduction, accurate identification of subtle color defects.

## Product Parameters

Model	Chutes Distribution (P+S+F)	Output Capacity (TPH)*	Accuracy (%) *	Rejection Ratio *	Weight (Kg)	Air Consumption (m³/min)*	Power (Kw)	Voltage Frequency	Dimension (LxWxH) (mm)
E4	2+1+1	2.0 - 3.5	>99%	>20:1	650	1.4-2.8	1.3	AC 220V 50Hz	1762x 1523x1761
E5	3+1+1	2.4 - 4.0	>99%	>20:1	850	1.8-3.0	1.6	AC 220V 50Hz	2050x1523x1781
E7	4+2+1	3.0 - 4.8	>99%	>20:1	1250	3.5-6.1	2.2	AC 220V 50Hz	2626x1523x1781
E8	5+2+1	3.5 - 5.5	>99%	>20:1	1250	3.5-6.1	2.2	AC 220V 50Hz	2626x1523x1781

**Note:** Sorting performance and capacity depend on factors such as material variety, input contamination, and raw material condition. • Capacity is defined as throughput = output + rejection. • Air consumption increases with a higher rejection rate for raw materials with greater contamination. • Technical specifications may change without prior notice due to ongoing research and development.

## RICETECH MACHINERY INDIA PRIVATE LIMITED

📍 Survey No.15, Suraram Industrial Area, Hyderabad 500 055, Telangana State, India.

🌐 [www.ricetecmachinery.com](http://www.ricetecmachinery.com) 📧 Email: [sales@ricetecmachinery.com](mailto:sales@ricetecmachinery.com)

**Sales : 94406 24430 | Service & Spares: 94406 24438, 94406 24439**